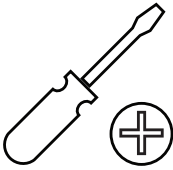
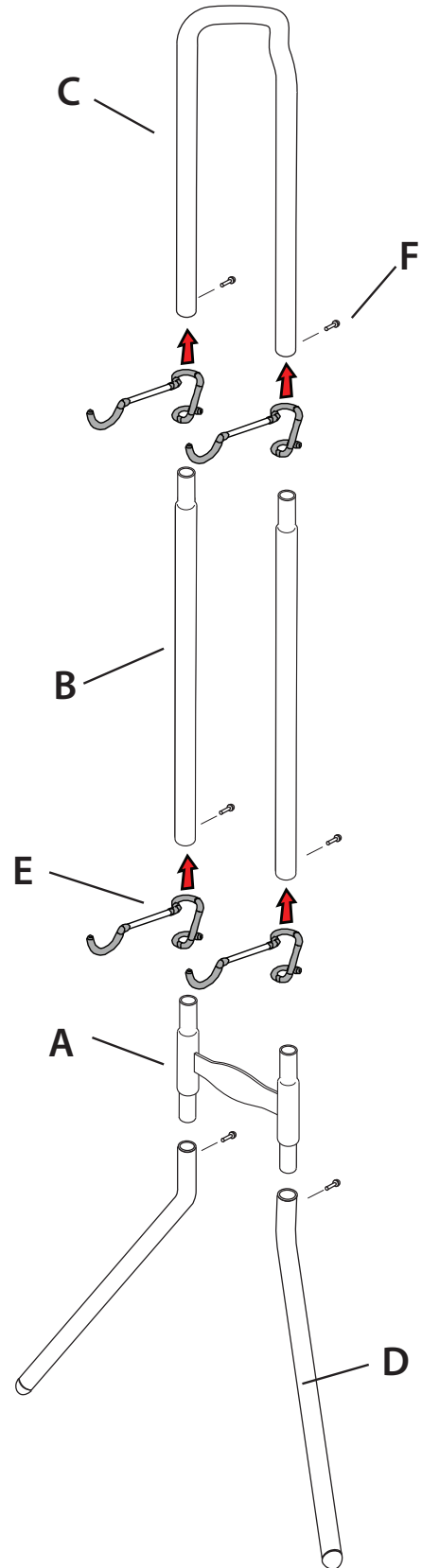


NEED SUPPORT? EMAIL US AT SERVICE@DELTACYCLE.COM ISSUES SPEEDILY RESOLVED

see deltacycle.com/michelangelo for an assembly video

Tool(s) Required	Reference Letter	Part Name	Pcs/Set
 Phillips Head Screwdriver	A	H Piece	x1
	B	Straight poles	x2
	C	U piece	x1
	D	Legs	x2
	E	Arms	x4
	F	Bolts	x6



theartofstorage™

Delta Design Company
36 York Avenue
Randolph, MA 02368 USA
Phone: 800-474-6615

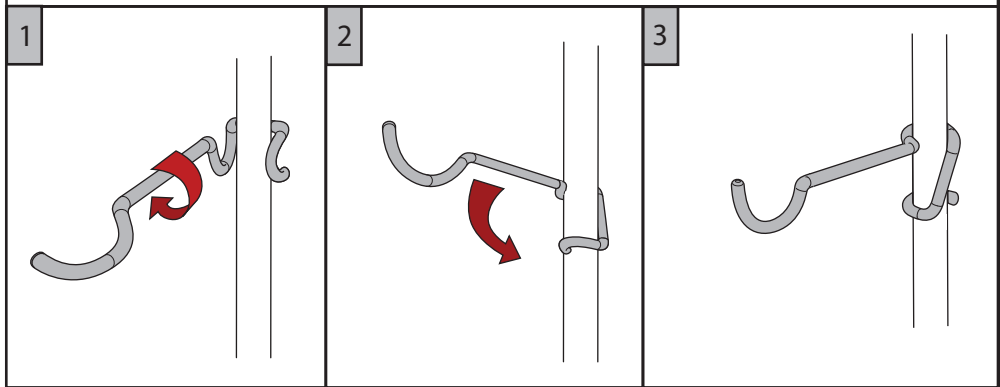
MICHELANGELO
RS6002 / HDRS6002
ASSEMBLY DIAGRAM

© Copyright 2015

NEED SUPPORT? EMAIL US AT SERVICE@DELTACYCLE.COM ISSUES SPEEDILY RESOLVED

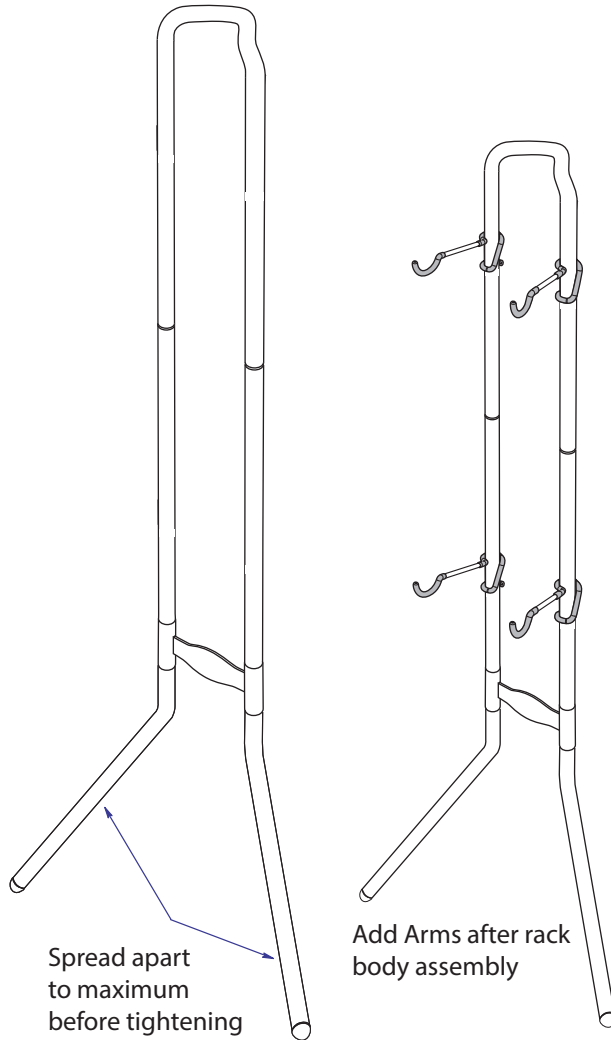
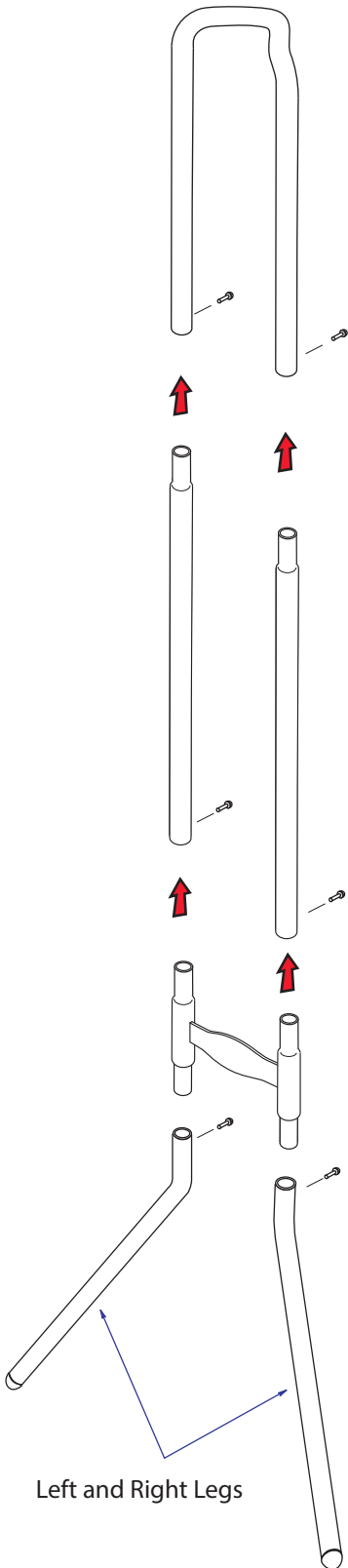
see deltacycle.com/michelangelo for an assembly video

ARM ATTACHMENT DIAGRAM



ASSEMBLY INSTRUCTIONS

1. Begin assembling the legs and work upwards.
2. Do not tighten bolts until rack is fully assembled and tubes are properly aligned.
3. Adjust height of arms before they bear any weight.
4. Make sure that all bolts are tight before using.



IMPORTANT WARNING:

DO NOT EXCEED MAXIMUM TOTAL WEIGHT LIMIT OF
 100 LBS (45.4 Kgs) - HDRS6002
 80 LBS (36 Kgs) - RS6002
MAX LOAD Per Hook
 25 LBS (11.4 kgs)
MAX WEIGHT Per Bike
 50LBS (22.7 kgs)

IMPORTANT SAFETY

In order to avoid accidental toppling of the rack, a wall stabilizing strap is supplied. This should be attached to the rack at one end with the bolt provided. The other end of the strap should be secured to the wall using a screw that is suitable for the type of wall construction. If in doubt, consult your hardware merchant for the correct method of fixing based on the wall construction.

